



FlexScan® M1950  
FlexScan® L578

19" and 17" Color LCD Monitors



*Get in on the Action*



# Stunning Images. Dynamic Sound.

The 19" FlexScan M1950 and 17" FlexScan L578 bring an exciting new dimension to the sights and sounds of movies, games and other multimedia sources. Movie action will be smoother and sharper, and games will sound punchier and more dynamic. The slim LCD screen fits anywhere, and EIZO even provides an extra-flexible stand, so you can sit in any position and have a perfect view. Choose your preferred size and get ready for real multimedia excitement.



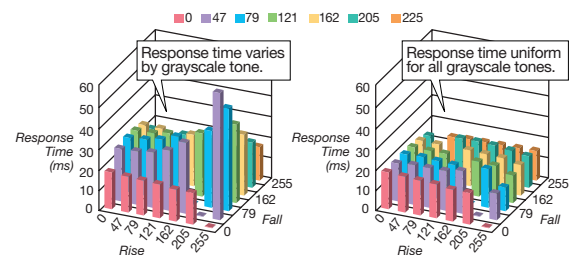
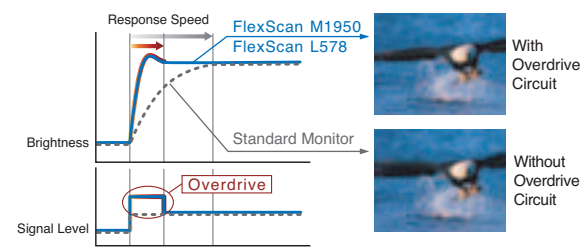
## FEATURES

### Superb Image Quality

#### Overdrive Circuit

The overdrive circuit smooths the flow of moving images by adjusting the voltage input for each frame based on image data from the previous three frames. Commonly used in LCD TVs, this circuit improves the time required to transit between gray levels to 8 ms for the M1950 and 12 ms for the L578, greatly reducing blurring in moving color images. The picture is clean and crisp, with significantly reduced ghosting.

#### Overdrive Circuit and Midtone Response Time

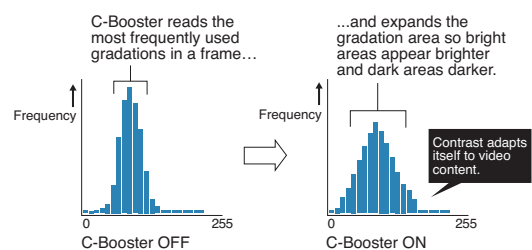


Without Overdrive Circuit (Standard Monitor) With Overdrive Circuit (M1950/L578)  
Response time as measured by EIZO.

#### C-Booster

C-Booster technology provides sharper and more vivid moving and still pictures by raising contrast levels and enhancing colors. It monitors the gradation ranges and boosts the contrast of the most frequently used

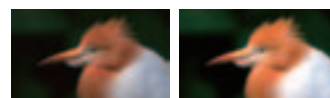
range, so bright colors in bright scenes and dark colors in dark scenes stand out in sharper detail. It also computes a running average over a series of frames so that contrast boost is applied smoothly during dark-bright transitions.



#### Fine Contrast

For optimum viewing of all types of content, the Fine Contrast function allows the selection of five imaging modes: Text, Picture, Movie, Custom, and sRGB. Each mode has its own settings for image parameters such as color temperature, gamma, and brightness. You can navigate between the modes simply by pressing a button on the front panel. For further convenience, a Fine Contrast mode can be assigned to any application with the bundled ScreenManager® Pro for LCD utility software. When the application is opened, the screen automatically changes to its assigned mode.

#### 1000:1 Contrast Ratio



This outstanding contrast performance makes images on dark backgrounds appear more vivid and ensures that colors retain their richness even in brightly lit rooms.

## Expansive Sound Performance

### SRS WOW Technology

Both monitors employ SRS WOW technology that provides a panoramic three-dimensional sound field, greatly increasing the enjoyment of movies and games from compact speakers. This technology consists of three functions. SRS restores imaging information lost in the recording process, so the sound is fuller and more dimensional. TruBass boosts bass performance through small speakers by imaging low frequency tones. FOCUS elevates the sound field to produce a higher and wider listening area with better clarity in the high frequencies.



## Ergonomic Design

### Two-Tier Frame

To emphasize their powerful and dynamic sound capabilities, these monitors have a new two-tier frame design with larger speakers (2W x 2) that focus the sound at your ears. The metal grille covering the speakers has a high aperture ratio to maximize the SRS WOW effects.



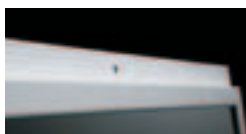
### ArcSwing 2 Stand



A true ergonomic advance, the ArcSwing 2 stand adjusts through a large arc-shaped range of movement. You can position it at eye level or at a low angle akin to reading a book, for best viewing no matter how and where you are using it.

### BrightRegulator

This function keeps the monitor at the ideal brightness level under all lighting conditions. A sensor on the front bezel takes readings of the ambient brightness and signals the backlight to adjust the screen brightness accordingly. In a brightly lit room, BrightRegulator increases the screen's brightness level, whereas in a dimly lit room it decreases the



brightness, thereby reducing eye fatigue and saving energy. If you prefer a constant brightness level regardless of ambient lighting, you can disable BrightRegulator by pressing a button on the front panel.

### USB Hub

Both monitors provide a high speed (480 Mb/s) USB hub with one upstream and two downstream ports. The downstream ports are conveniently located on the side of the monitor for quick connection of peripherals.



### Digital and Analog Input Terminals



DVI-D and D-Sub mini 15-pin input terminals allow the monitors to accept both digital and analog inputs. If both types are connected, you can switch between them via a front panel button.

### Customer Assurance

A five-year warranty offers a long service life, and compliance with leading industry standards such as TCO'03 (off-white cabinet only) and TÜV Ergonomics ensures a better working environment. The EIZO Eco Products 2004 label indicates these products meet strict internal requirements for design, manufacturing, packaging, and usage, including the introduction of lead-free solder and chrome-free steel plates.



### Accessories

A variety of accessories are available including a dual height adjustable stand, mounting arms, client management software, and panel protectors. For detailed information, please see [www.eizo.com/products/accessories/](http://www.eizo.com/products/accessories/)



Panel protector includes both glossy (left) and non-glare surfaces.

### Three Color Options

The cabinet comes in three colors: off-white, silver, and black.



# FlexScan M1950/L578

19" and 17" Color LCD Monitors



## Specifications

		FlexScan M1950	FlexScan L578	
Panel	Panel Size and Type	48 cm (19") TFT color LCD panel	43 cm (17") TFT color LCD panel	
	Viewing Angles (H, V)	178°, 178° (at contrast ratio of 10:1)	178°, 178° (at contrast ratio of 10:1)	
	Brightness / Contrast	280 cd/m <sup>2</sup> / 1000:1	250 cd/m <sup>2</sup> / 1000:1	
	Response Time	16 ms (typical)	16 ms (typical)	
	Midtone Response Time	8 ms <sup>1</sup> (typical)	12 ms <sup>1</sup> (typical)	
	Native Resolution	1280 × 1024	1280 × 1024	
	Active Display Size (H × V)	376 × 301 mm	338 × 270 mm	
	Viewable Image Size	Diagonal: 481 mm	Diagonal: 432 mm	
	Pixel Pitch	0.294 × 0.294 mm	0.264 × 0.264 mm	
Display Colors	16.77 million from a palette of 1.06 billion	16.77 million from a palette of 1.06 billion		
Cabinet Colors		Off-White, Black, Silver	Off-White, Black, Silver	
Dot Clock		Analog: 135 MHz, Digital: 108 MHz	Analog: 135 MHz, Digital: 108 MHz	
Scanning Frequency (H, V)	Analog	24.8 – 80 kHz, 50 – 75 Hz	24.8 – 80 kHz, 50 – 75 Hz	
	Digital	31 – 64 kHz, 59 – 61 Hz (VGA Text: 69 – 71 Hz)	31 – 64 kHz, 59 – 61 Hz (VGA Text: 69 – 71 Hz)	
Input Signals		Analog: RGB Analog, Digital: DVI Standard 1.0	Analog: RGB Analog, Digital: DVI Standard 1.0	
Input Terminals		D-Sub mini 15 pin, DVI-D 24 pin (switchable)	D-Sub mini 15 pin, DVI-D 24 pin (switchable)	
USB Port / Standard		1 upstream, 2 downstream / USB Standard Rev. 2.0	1 upstream, 2 downstream / USB Standard Rev. 2.0	
Plug & Play		VESA DDC 2B	VESA DDC 2B	
Power	Power Requirements	AC 100 – 120 V, 200 – 240 V: 50 / 60 Hz	AC 100 – 120 V, 200 – 240 V: 50 / 60 Hz	
	Power Consumption	55 W (maximum)	50 W (maximum)	
	Power Save Mode	Less than 2 W	Less than 2 W	
Physical Specifications	Height Adjustment Range	104 mm	104 mm	
	Tilt / Swivel / Pivot	60° Up, 5° Down / 172° Right, 172° Left / –	60° Up, 5° Down / 172° Right, 172° Left / –	
	Dimensions (W × H × D)	With Stand: 483 × 288 – 441 × 200 mm Without Stand: 483 × 370 × 60 mm	With Stand: 441 × 274.5 – 423.5 × 200 mm Without Stand: 441 × 335 × 55 mm	
	Net Weight	With Stand: 7.1 kg, Without Stand: 5.3 kg	With Stand: 5.6 kg, Without Stand: 3.7 kg	
Auto Brightness Functions		Auto Brightness Stabilization, BrightRegulator	Auto Brightness Stabilization, BrightRegulator	
Auto Adjustment Functions		Auto Adjustment	Auto Adjustment	
Display Mode Options		Fine Contrast (Text, Picture, Movie, sRGB, Custom, Window-Movie <sup>2</sup> ), Auto Fine Contrast <sup>3</sup>	Fine Contrast (Text, Picture, Movie, sRGB, Custom, Window-Movie <sup>2</sup> ), Auto Fine Contrast <sup>3</sup>	
Screen-Manager OSD Adjustment Functions	Screen Adjustment	Clock, Phase, Position, Brightness, Smoothing (5 stages)	Clock, Phase, Position, Brightness, Smoothing (5 stages)	
	Color Adjustment	Range Adjustment (RGB), Gamma, Temperature (in 500 K increments from 4,000 K – 10,000 K), Saturation, Hue, Gain, C-Booster, Reset	Range Adjustment (RGB), Gamma, Temperature (in 500 K increments from 4,000 K – 10,000 K), Saturation, Hue, Gain, C-Booster, Reset	
	Power Save Settings	Analog	VESA DPMS (Auto), Off Timer	VESA DPMS (Auto), Off Timer
		Digital	DVI DMPM (Auto), Off Timer	DVI DMPM (Auto), Off Timer
	Audio	Volume, Mute, Surround, Tone (treble, bass), Balance, Power Save, Reset	Volume, Mute, Surround, Tone (treble, bass), Balance, Power Save, Reset	
Other Settings	Signal Settings, Product Information (product name, serial number, usage time), OSD Menu Settings, Adjustment Lock, Languages (English, French, German, Italian, Japanese, Spanish, Swedish), Reset	Signal Settings, Product Information (product name, serial number, usage time), OSD Menu Settings, Adjustment Lock, Languages (English, French, German, Italian, Japanese, Spanish, Swedish), Reset		
Audio		Dual 2 W built-in speakers, dual input /headphone jacks	Dual 2 W built-in speakers, dual inputs /headphone jacks	
Certifications and Standards		TCO'03 (off-white), TCO'99 (black, silver), TÜV/Ergonomics (including ISO 13406-2), TÜV/GS, c-Tick, CE, CB, UL (cTÜVus), CSA (cTÜVus), FCC-B, Canadian ICES-003-B, TÜV/S, VCCI-B, EPA ENERGY STAR <sup>®</sup> , EIZO Eco Products 2004	TCO'03 (off-white), TCO'99 (black, silver), TÜV/Ergonomics (including ISO 13406-2), TÜV/GS, c-Tick, CE, CB, UL (cTÜVus), CSA (cTÜVus), FCC-B, Canadian ICES-003-B, TÜV/S, VCCI-B, EPA ENERGY STAR <sup>®</sup> , EIZO Eco Products 2004	
Supplied Accessories		AC power cord, signal cables (D-Sub mini 15 pin – D-Sub mini 15 pin, DVI-D – DVI-D), USB cable, 2 audio cables, setup guide, EIZO LCD Utility Disk (HTML user's manual, Screen-Manager Pro for LCD <sup>4</sup> , ICC profiles), 4 screws for mount option, warranty registration card	AC power cord, signal cables (D-Sub mini 15 pin – D-Sub mini 15 pin, DVI-D – DVI-D), USB cable, 2 audio cables, setup guide, EIZO LCD Utility Disk (HTML user's manual, Screen-Manager Pro for LCD <sup>4</sup> , ICC profiles), 4 screws for mount option, warranty registration card	
Warranty		Five Years <sup>5</sup>	Five Years <sup>5</sup>	

<sup>1</sup> Average response time measured between each grayscale level of 31, 63, 95, 127, 159, 191, and 223. <sup>2</sup> WindowMovie mode is selectable only when Auto Fine Contrast is active. <sup>3</sup> Bundled ScreenManager Pro for LCD is necessary to activate Auto Fine Contrast. Support for those functions varies with the graphics board used. <sup>4</sup> ScreenManager Pro for LCD is compatible with the Microsoft<sup>®</sup> Windows<sup>®</sup> 98SE/Me/2000/XP operating systems only. <sup>5</sup> The usage time is limited to 30,000 hours or less, and the warranty period of the LCD panel and backlight is limited to three years from the date of purchase.

With current LCD technology, a panel may contain a limited number of missing or flickering pixels.